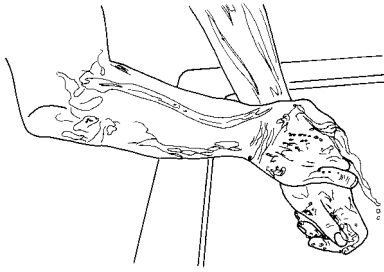




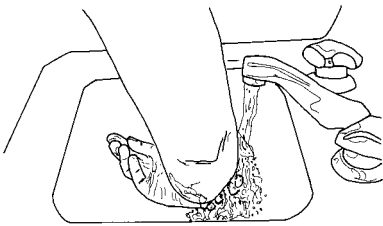
# HAND WASHING TECHNIQUES



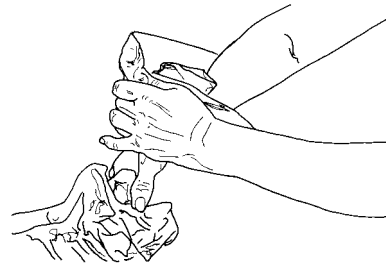
1. Wet hands with warm water.  
Lather with soap.



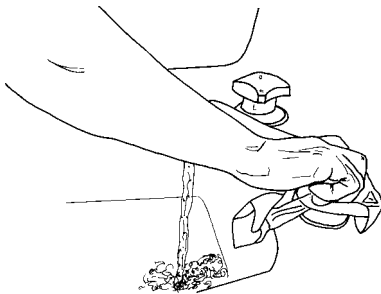
2. Lather to your elbows.  
Scrub hands for 20  
seconds.



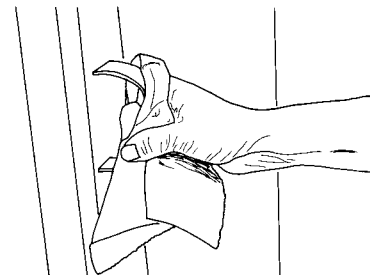
3. Rinse hands and elbows  
thoroughly.



4. Dry hands with a  
single use towel.



5. Use towel to turn off  
the faucet.



6. Use towel to open the  
door.