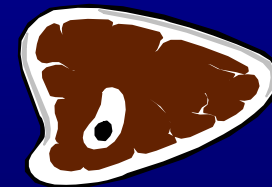


# HACCP Principle 2: Identifying the Critical Control Points (CCPs)

**Dennis Burson**  
University of Nebraska



# Introduction

- **The HACCP team identifies Critical Control Points Based on the Hazard Analysis.**
  - **The Hazard is identified**
  - **Preventative measures are considered**

# Introduction

- **There are several points in the food processing system where biological, physical or chemical hazards can be controlled.**
- **It is likely that only a few points are CCP's where loss of control would result in the production of a potentially unsafe food.**

# CCP's vs CP's

- **Some HACCP teams like to think of Critical Control Points and Control Points.**
- **Other HACCP teams prefer to place Control Points as Good Manufacturing Practices or as Standard Operating Procedures.**

# Control Point

- **A point, step, or procedure at which biological, physical, or chemical factors can be controlled.**
  - **Metal detection before grinding.**

# Critical Control Point

- **A point, step, or procedure at which control can be applied and a food safety hazard can be prevented, eliminated, or reduced to acceptable levels.**
  - **Metal detection after packaging**
  - **Pasterurizer**
  - **pH drop during fermentation**
  - **Retort**

# The CCP Decision Tree

- The HACCP team should utilize the decision tree to evaluate each point where significant hazards can be prevented eliminated or reduced to acceptable levels.
- NACMCF (1992) CCP decision tree
  - page 8-10
- The Modified CCP decision tree
  - page 8-10

# CCP DECISION TREE

**Q1. Does this step involve a hazard of sufficient risk and severity to warrant its control?**

**Yes**



**No → Not a CCP**

**Q2. Does a preventive measure for the hazard exist at this step?**

**Yes**



**No**

**Is Control at this step  
Necessary for Safety**



**Yes, Modify  
Step**

**No → Not a CCP**

**Q3. Is control at this step necessary to prevent, eliminate or reduce the risk of the hazard to consumers?**

**Yes → CCP**

**No → Not a CCP**

# CCP Decision Tree

- **Used after the hazard analysis**
- **Used for "significant hazards"**
- **A process which does not have a "significant hazard" does not need a HACCP plan**

# CCP Decision Tree

- **Subsequent steps in the process may be more effective for controlling a hazard.**
- **More than one step may be involved in controlling a hazard.**
- **More than one hazard may be controlled by a specific preventative measure.**